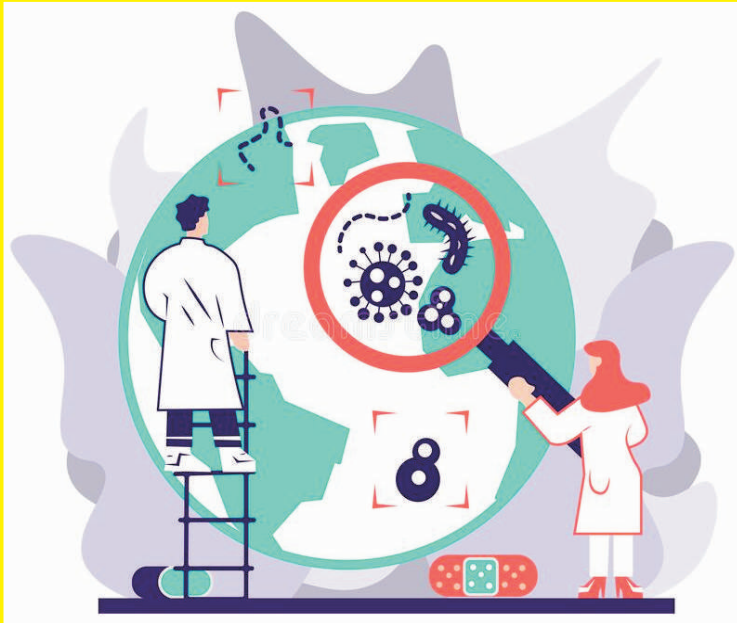


A HANDBOOK ON OUTBREAK INVESTIGATION



Dr. V. Priya

*Department of Microbiology
Sree Balaji Medical College and Hospital*

Published by

**Sree Balaji Medical College & Hospital
Bharath Institute of Higher Education & Research (BIHER)**

Chromepet, Chennai - 600044, Tamilnadu, India



A Handbook on Outbreak Investigation

Dr. V. Priya

*Department of Microbiology
Sree Balaji Medical College and Hospital*



Department of Microbiology
Sree Balaji Medical College & Hospital
Bharath Institute of Higher Education & Research (BIHER)
Chromepet, Chennai - 600044, Tamilnadu, India



be started at the starting of the investigation itself. If the control measures are known it should be made available as soon as possible.

Confidentiality issues to be taken seriously at all cost. Communication between the health worker and the patients should be made confidential. The rights of the patients are to be followed and implemented at all levels. Treatment failures are to be avoided.

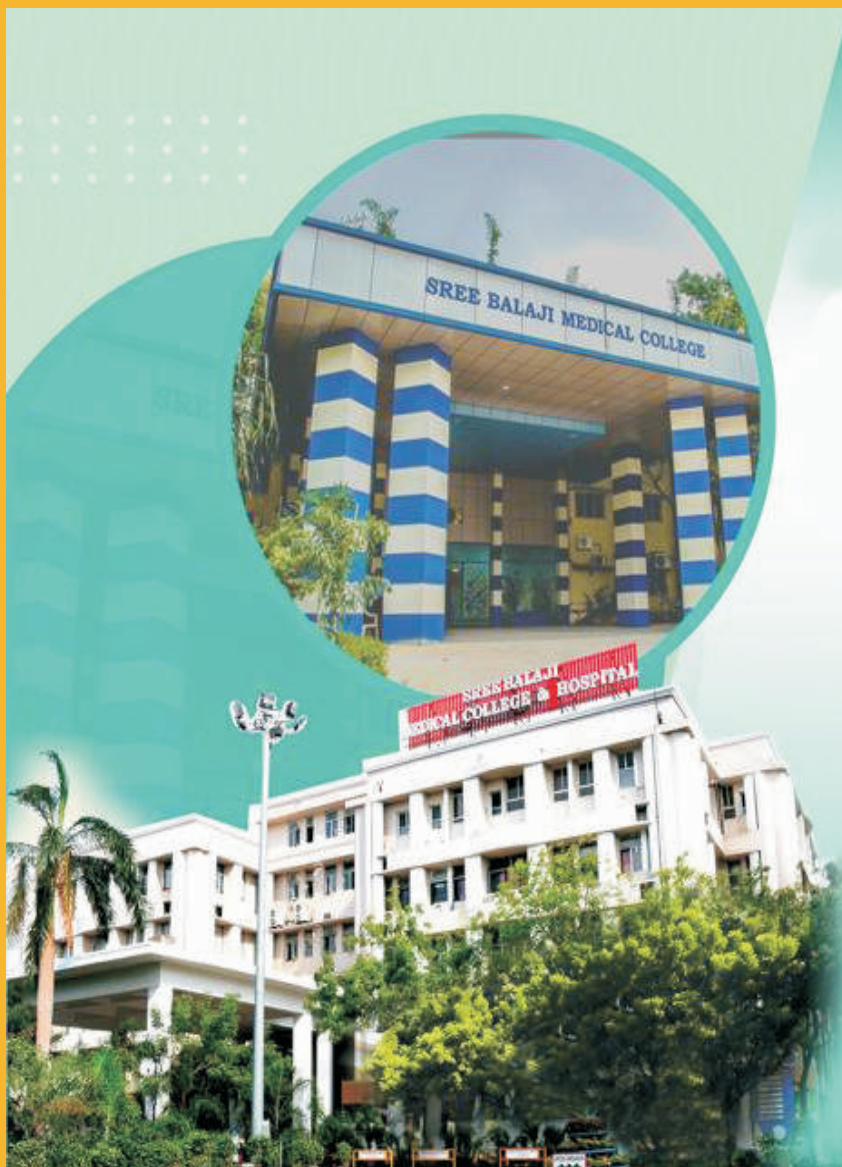
Controlling of the spread to be done by blocking more than one mode of transmission. Elimination of the agent is the first step in communicable diseases by appropriate antibiotics. Risk of transmission should be eliminated or reduced to a large extent. Quarantine, counselling all have their important roles in controlling the spread. The contaminated vehicles of disease transmission to be removed as early as possible. Promoting strategies like PPE, hand washing to be implemented strictly. In health care settings policies to be drawn and followed meticulously to prevent future spread.

13. Surveillance

At the governmental level and at the local facility level surveillance strategies to be introduced for continuous monitoring of cases. This is a long process and needs to be coordinate with governmental and non governmental organisations. Records and data to be maintained and made available for further research.

14. Communication of the findings

Communicating the treasure of knowledge which can help in future to design safety measures, implementation of policies and research work not only in the specific area but throughout the world is a very important aspect of investigation. We have seen the COVID 19 pandemic which is still being a challenge to control. But with the cooperation of different levels of organizations and population studies the control measures were implemented as early as possible. The lessons learned are of immense help in controlling the pandemics to come which are inevitable. Let's survive them by meticulous investigation of outbreaks which we have learned through the history and as the concepts we studied in the steps that we learned so far.



Sree Balaji Medical College & Hospital

Typeset & Printed by

Aksharaa Muthra Aalayam Pvt., Ltd.,

No.441/303, Anna Salai, Teynampet, Chennai-18, Tamilnadu, India

Ph. 044 - 45080083. Cell: 9282134542

E-mail: murali.aks@gmail.com

ISBN: 978-93-94609-35-8



9 789394 609358