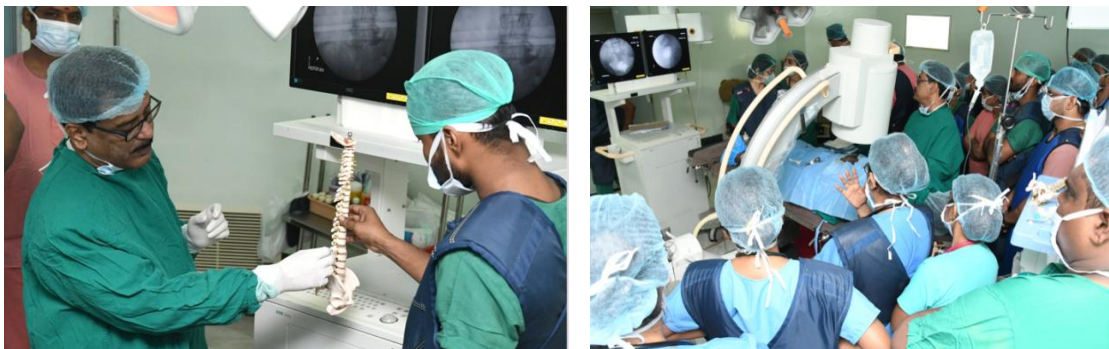


## CME on ANATOMY AND PHYSIOLOGY OF PAIN PATHWAY

Department of Anaesthesiology, P.M & C.C "BALPARL" & Medical Education Unit Organized a CME on "ANATOMY AND PHYSIOLOGY OF PAIN PATHWAY" On



04.10.2019. GUEST DR. GAUTAM DAS, M.D (Anaes), FIPP Director, Daradia Pain Clinic, Kolkata. Anatomy and physiology of the pain processing pathways. The transmission and parcellation of noxious stimuli from the peripheral nervous system to the central nervous system is discussed. In addition, the inhibitory and excitatory systems that regulate pain along with the consequences of dysfunction are considered.



## CME Programme on THYROID OPHTHALMOPATHY

Department of Ophthalmology & Medical Education Unit Organized a CME programme THYROID OPHTHALMOPATHY on 5 October 2019, Guest Speaker: Dr. Ravindra Mohan



(Managing Director, Trinethra Eye Hospital) Thyroid-associated ophthalmopathy is the most frequent extrathyroidal involvement of Graves' disease but it sometimes occurs in euthyroid

or hypothyroid patients. Thyroid-associated ophthalmopathy is an autoimmune disorder, but its pathogenesis is not completely understood.

### **CME Programme on XNIT SIGHT SAVER**

Department of Ophthalmology & Medical Education Unit Organized a CME programme XNIT SIGHT SAVER on 9 October 2019 GUEST SPEAKER: Dr. Prabu Baskaran - Consultant Aravind Eye Hospital, Chennai.



Sightsavers is a development organisation working to eliminate avoidable blindness and promotes equality of opportunity for people with disability.

### **INTERNATIONAL CONFERENCE ON SUICIDE PREVENTION**

Department of Psychiatry Organized an INTERNATIONAL CONFERENCE on SUICIDE PREVENTION- " WORLD MENTAL HEALTH DAY 10th October, 2019.



SCIENTIFIC PROGRAMME, Suicide- Overview Dr. M. SOUNDARARAJAN Senior Consultant, National Health Service (NHS), UK. Suicide in Psychiatric Disorders-With Special Reference to Alcohol and Other Substance Use Disorders Dr. M. SURESH KUMAR, Director, PSYMED Senior Consultant Psychiatrist Suicide Prevention Dr. MALLIKA





SOUNDARARAJAN, Senior Consultant, National Health Service (NHS), UK. Suicide is when people harm themselves with the goal of ending their life, and they die as a result. A suicide attempt is when people harm themselves with the goal of ending their life, but they do not die. Avoid using terms such as “committing suicide,” “successful suicide,” or

“failed suicide” when referring to suicide and suicide attempts, as these terms often carry negative meanings.

### **CME Programme on UNDERSTANDING LAMELLAR KERATOPLASTY**

Department of Ophthalmology and Medical Education Unit Organized an CME programme on UNDERSTANDING LAMELLAR KERATOPLASTY on 12 October 2019. Guest Speaker: Seema Ramakrishnan, Consultant, Cornea Services, Aravind Eye Hospital, Chennai



Lamellar keratoplasty is an operation in which diseased corneal tissue is removed and replaced by lamellar corneal tissue from a donor. The procedure is performed either to improve vision (optical keratoplasty) or to provide structural support for the cornea (tectonic keratoplasty).

### **CME Programme on UVEITIS UPDATE**



Department of Ophthalmology & Medical Education Unit Organize an CME programme UVEITIS UPDATE on 14 October 2019, Guest Speaker: Dr. RADHA ANNAMALAI Professor of Ophthalmology, Sri Ramachandra Medical College, Chennai



Uveitis is a disease process that involves inflammation of the eye. There are multiple different causes of uveitis. These include infections, inflammatory diseases, trauma, and idiopathic cases. Symptoms range from eye pain to complete vision loss. This activity reviews the etiology, pathophysiology, evaluation, and management of uveitis and highlights the role of the interprofessional team in evaluating and treating patients with this condition.

#### **Medical Camp World Diabetics day**



#### **CME Programme on BREAST CONSERVATIVE SURGERY**

Department of General Surgery & Medical Education Unit Organizes an CME Programme on "BREAST CONSERVATIVE SURGERY" on 15 October 2019. Guest Speaker: by Dr.E.DINAKARA BABU, MBBS, MS, MRCS, LRCP, FRCS(Edinburgh). FRCS(Glasgow),





FRCS(England), FRCS (Ireland), FRCS Intercollegiate). Honorary Professor (Brunel University) Consultant and Director of Breast and Endocrine Surgery. Senior Lecturer, Imperial College London)



### **WORKSHOP ON BOWEL ANASTOMOSES**



Department of General Surgery Suturing and Anastomoses Workshop for Postgraduates, Workshop on Bowel Anastomoses (Sponsored by Johnson & Johnson, Ethicon Endo-Surgery) on October 17, 2019.

### **INTERNATIONAL CONFERENCE On NEURO/HEAD & NECK IMAGING**

Department of Radiology organized an International conference on Neuro/Heads/Neck imaging on 18"-20" October, 2019 Guest Speaker: Dr. M. Saravanan MBBS, FRCR (London), CCT(UK) Consultant Neuroradiologist & Interventional Neuroradiologist Cure Healthcare Systems, Chennai. Guest Speaker: -Dr. Mark D. Murphy (USA) Physician-in-



Chief and Chief, Musculoskeletal Imaging American Institute for Radiology Pathology and Professor of Radiology Uniformed Services University of the Health Science Bethesda, MD. Guest Speaker: Dr. Deborah R. Shatzkes Professor of Radiology and Otolaryngology Donald and Barbara Zucker School of Medicine At Hofstra/Northwell Chief Head and Neck Radiology Northwell Health & President, American Society of Head & Neck Radiology

Lenox Hill Hospital & the New York Head & Neck Institute, Guest Speaker: Dr. C. Douglas Phillips Professor of Radiology Director of Head and Neck Imaging Weill Cornell Medical Center New York-Presbyterian Hospital.

### **YUKTHI\_2K19**



National level intercollege Competition Conducted YUKTHI 2K19 Morpheus - pulmonology workshop, Sleep study



polysomnography, Live hookup session on the patient, hands-on training session in eeg, cpap, bipap interpretation of polysomnography charts (PSG)

### **National Conference on Pelvic Anatomy**

Department of Anatomy organizes a National Conference on Pelvic Anatomy 'PANCON-2019' on 19 & 20th October 2019.



### **CME Programme on RECENT TRENDS IN ARMD**

Department of Ophthalmology & Medical Education Unit organizes an CME programme on RECENT TRENDS IN ARMD Guest Speaker: Dr. Rajesh Sohanraj (Vitreoretinal Surgeon, Amrit Eye Hospital) on 23 October 2019.





## **CME on PAEDIATRIC FRACTURES OF THE ELBOW JOINT AND EPIPHYSEAL INJURIES**

Department of Orthopaedics & Medical Education Unit organized an CME programme on "PAEDIATRIC FRACTURES OF THE ELBOW JOINT AND EPIPHYSEAL INJURIES"

Guest Speaker: Dr. VIJAY SRIRAM MBBS. MS. ORTHO, Paediatric Ortho Consultant Child Trust Hospital And Rainbow Children's Hospital on 23.10.19



## **Guest Lectures on ABNORMAL UTERINE BLEEDING - CONTROVERSIES & DILEMMAS**

Department of Obstetrics & Gynaecology & Medical Education Unit, Organize a Guest Lectures on ABNORMAL UTERINE BLEEDING - CONTROVERSIES & DILEMMAS On 24.10.2019. Guest Speaker: Dr. K. Balakumari, M.D., Senior Consultant, KS. Hospital, Chennai.



## **CME Programme on COMMUNITY OPHTHALMOLOGY OF EYE BANKING**

Department of Ophthalmology & Medical Education Unit Organizes an CME programme on COMMUNITY OPHTHALMOLOGY OF EYE BANKING Guest Speaker: Dr. Sankaran V.M. (Consultant, Dr. Agarwal's Eye Hospital, Kanchipuram) on 25th October 2019.



## **WORLD PSORIASIS DAY**

Department of Dermatology organizes a Guest lecture on TREATMENT OF PSORIASIS WITH TOPICAL AGENTS on 30TH OCTOBER 2019. Guest Speaker: Prof. PARIMALAM KUMAR, MD, DD. FRCP, FIAD, MNAMS Professor and H.O.D, Dermatology GOVT. Stanley Hospital, Chennai.



## **Work Shop on LIVE DEMONSTRATION OF RADIO FREQUENCY ABLATION FOR VARICOSE VEINS**

Department of General Surgery and Medical Educational Unit Organized an Work Shop on LIVE DEMONSTRATION OF RADIO FREQUENCY ABLATION FOR VARICOSE



VEINS On 1th November 2019. Guest Speaker: Dr. G. THULASIKUMAR, MS., Mch., (VASCULAR SURGERY) Senior Consultant, Department of Vascular Surgery Sooriya Hospital, Chennai.

## **World Occupational Therapy Month NIPMED**





### **CME Programme on FOOTWEAR IN ORTHOPAEDICS**

Department of Orthopaedics & Medical Education Unit organized an programme on FOOTWEAR IN ORTHOPAEDICS on 14th November 2019. Guest Speaker: Dr. S.V. Ramkumar, Orthotics Specialist.



### **CME on CLINICAL APPROACH TO SURGICAL JAUNDICE**

Department of General Surgery and Medical Education Unit Organized an CME on CLINICAL APPROACH TO SURGICAL JAUNDICE on 15 November 2019. Guest Speaker: Dr. D. PREM KUMAR Professor, AIMST University, Malaysia.



### **World Pneumonia Day-Theme Oration**

Department of Pediatrics & Medical Education Unit organized an Guest Lecture on "World Pneumonia Day-Theme Oration" on 18.11.2019. Guest Speaker: Dr. D. Vijayasekaran, MD., DCH., PhD., FIAP Consultant Pulmonologist, K KCTH, Apollo Children's Hospital, Chennai.



### **Seminar on GESTATIONAL DIABETES MELLITUS & PUBLIC AWARENESS**

Department of Obstetrics & Gynaecology Biochemistry & Medical Education Unit organized a Seminar on GESTATIONAL DIABETES MELLITUS & PUBLIC AWARENESS on 20.11.2019. GDM is a significant public health concern because of its long-term implications



for maternal and child health. This study provides additional information about prevalence of GDM, which is important for understanding the future burden of related diseases, most notably type 2 diabetes, and related health care costs.

### **CME on DIABETIC DYSLIPIDEMIA**

Department of General Medicine Organized an CME on DIABETIC DYSLIPIDEMIA on November 22, 2019. Guest Speaker: PROF R.S HARIHARAN MD Director, Hariharan Institute of Diabetes & Hariharan Diabetes & Heart Care Hospital (P) Ltd., Nanganallur, Chennai.



### **Workshop on AUTONOMIC FUNCTION TEST**

Department of Physiology & Medical Education Unit Organized a Workshop on Autonomic Function Test -Ad Instruments India on 22.11.2019





## **BALSURGE**

Department of General Surgery and Medical Educational Unit Organized a National Conference on Surgical Gastroenterology on 22, 23 Nov. 2019.



## **Workshop on HIP REPLACEMENT**



Department of Orthopaedics & Medical Education Unit Organized a Workshop on BASIC TECHNIQUES OF TOTAL HIP REPLACEMENT on 27 November 2019.



## **CME programme on DIGITAL DETOX -UNWIRING THE WIRELESS**

Department of Pharmacology organized a CME Programme on DIGITAL DETOX - UNWIRING THE WIRELESS on 29th November 2019. Guest Speaker: Dr M. SREEPRATAP, MBBS, MRC Psych Consultant Psychiatrist, Chairman and Medical director, Shadithya Hospitals, Chennai Founder of the SPM Course, UK & FRANZCP exams in Australia & New Zealand



### **workshop on BENEFITS & PITFALLS IN HORMONAL CONTRACEPTION**

Department Of Obstetrics & Gynaecology & Medical Education Unit Organized a Guest



Lecture and workshop on BENEFITS & PITFALLS IN HORMONAL CONTRACEPTION

Guest Speaker: Dr. Nandita A Thakkar, MBBS, MD, ORM Advanced. Germany Academic Head & Coordinator, Senior Consultant, Mehta Hospital, Chennai, on 29.11.2019.

### **National Conference & Workshop on KNEE ARTHROSCOPY**

Department of Orthopaedics & Medical Education Unit Organized a National Conference & Workshop on KNEE ARTHROSCOPY Guest Speaker: Dr. Arun M.S. Ortho, MRCS, Dr.

Zubair Khan MS. Ortho, Orthopaedic Consultant Hindu Mission Hospital on

29.11.19 & 30.11.19



### **CME on ATHEROGENIC DYSLIPIDEMIA**

Department of General Medicine & MEU Organized an CME on ATHEROGENIC DYSLIPIDEMIA On December 5, 2019. Guest Speaker: DR. A. PANEERSELVAM, MD

Director, ARUNA DIABETES CENTRE Chennai.





### **Guest Lecture: Series**

Research & Development Wing, Departments of Physiology, Pharmacology & Community Medicine Organized a Guest lecture: series on "Recent advances in molecular medicine" 'Cell signalling in neuronal cells, Stress and Stress hormones, Physiopathology of Calcium signals,



Neurodegenerative diseases Neurosecretion and drug development, Alcohol Addiction/Tolerance' On 5, 7, 13, 16" & 17th December 2019. Guest Speaker: Dr. Govindan Dayanithi, Ph.D., Research Director in CNRS INSERM U1198/EPHE, University of Montpellier, France.



### **SEMINAR on "Implementation of Revised Persons with Disabilities Act (RPWD) 2016"**

Department of Orthopaedics and Department of Physical Medicine & Rehabilitation & Medical Education Unit in association with National Institute for Empowerment of Persons with Multiple Disabilities Department of Empowerment of Persons with Multiple Disabilities (Divyangjan) Ministry of Social Justice and Empowerment, Govt of India Organized a SEMINAR on "**Implementation of Revised Persons with Disabilities Act (RPWD) 2016**" on 6" December 2019.



## **GGCON 2019**

Department of OBG and Medical Education unit  
Organized an INTERNATIONAL  
CONFERENCE ON GERIATRIC  
GYNAECOLOGY (GGCON 2019) on 6,7&8  
December 2019.



## **CME on PORTRAIT OF AN EFFECTIVE ATTITUDE AND COMMUNICATION**

Department of Anatomy & Medical Education Unit Organized an CME ON "PORTRAIT OF AN EFFECTIVE ATTITUDE AND COMMUNICATION" Guest Speaker: Dr. S. Karthick MD, Professor of Anatomy, Melmaruvathur Adhiparasakthi Institute of Medical Sciences and Research, On 07th December, 2019



## **Guest Lecture on "OXYTOCIN & VASOPRESSIN IN THE FIELD OF OBSTETRICS"**

Department of Obstetrics & Gynaecology organized Guest Lecture on "OXYTOCIN & VASOPRESSIN IN THE FIELD OF OBSTETRICS" 09-12-2019. Guest Speaker: Dr. GOVINDAN DAYANITHI, Ph.D Research Director in CNRS INSERM U1198/EPHE University of Montpellier, France





### **Guest Lecture: On CLINICAL SIGNS IN TUBERCULOSIS**

Department of General Medicine & Department of Respiratory Medicine Organized a Guest Lecture: On "CLINICAL SIGNS IN TUBERCULOSIS" Guest Speaker: Dr. Sundar MBBS MD DTGD



### **Seminar Programme on BASICS OF SQUINT**

Department of Ophthalmology & Medical Education Unit Organized a Seminar Programme on BASICS OF SQUINT on 16 December 2019. Guest Speaker: Dr. Venkata Madhavi, Consultant Vishnu Eye Clinic, Chennai.



### **CME on Clinical Pharmacology**

Department of Pharmacology Organized CME on Clinical Pharmacology on 16.12.19. Guest Speaker: Dr.Selva Pandian, MD, Consultant Physician & Diabetologist, Dr.R.H.Sundar, MD, DNB, Interventional Cardiologist, Choices after Metformin Dr.S.Krishnamoorthy, Senior Physician & Diabetologist, Gliptins as A Class.



## "10th GRADUATION DAY"



SREE BALAJI MEDICAL COLLEGE & HOSPITAL A constituent college of BHARATH INSTITUTE OF RECHER EDUCATION AND RESEARCH (Declared as Deemed to be University under section 3 of UGC Act, 1956) "10<sup>th</sup> Graduation Day" Prof. D. Kannan, M.S., M.Ch. FRCS, Former Director, Institute of Surgical Gastroenterology, Madras Medical College, Chennai. Chief Guest & Distribute the Degree certificates. On 17 December 2019.

## NATCON ENT 2019

Department of ENT, head and neck surgery Organized an National Conference on OBSTRUCTIVE SLEEP APNOEA Guest Speaker:by Dr. Ranjini Raghavan Sunrise Hospital Kochi, Dr. SeemabShaikh, Inmadar Hospital, pune, Dr. Dhanasekar, Sri Ramachandra Medical College and Research Institute, Chennai on 18 December 2019



## PYROCON-2019

Department of General Medicine MEU Organized a Conference on Infectious Diseases 19, December 2019.





## REMOCON 2019

Department of Physiology Organized an International Conference On MOLECULAR AND REGENERATIVE MEDICINE Guest Speaker: Dr. Mohamed Rela M. S FRCS, D.Sc



Chairman and Managing Director Dr. Rela Institute and Medical Centre, Dr. Motokazu Tsujikawa, M.D, PhD Tsujkawa Lab Osaka University Medical School Dept of Ophthalmology Yamadacka Suta 565-0872 Japan, Dr. T. Rajkumar MBBS, MD, DM, Ph.D. D.Sc (Oncology). D.Sc.

(Honoris Causal) Professor and Head, Dept. of Molecular Oncology Cancer Insitute (WIA), Adyar Chennai-600020, India, Dr. Iqbal Ahmad, Ph.D. Professor Ophthalmology and Visual Sciences Associate Dean and Director, Postdoctoral Education and Research, Department of



Ophthalmology and Visual Sciences University of Nebraska Medical Center (UNMC), USA Durham Research Center, Dr.Arkasubhra Ghosh, M.S Head of Department, GROW Research Laboratory Molecular Signaling and Gene therapy Narayana Nethralaya Foundation, Narayana Health City Bangalore, India Adjunct Research Scientist Singapore Eye Research Institute, on 21 & 22nd December 2019.

## Traffic Awareness Programme



Sree Balaji Medical College organised a Traffic rules awareness program on 12-12-19 Dr.Kavimani, NSS program officer coordinated the student volunteers and made the arrangements. NSS team & Volunteers Participated in the above programme Thiru.N.M.Mayilvahan, IPS, Deputy Commissioner -South Traffic presided over

the function and spoke about the importance of Traffic rules. Thiru. Anwar Basha, Assistant

Commissioner South Traffic and Thiru. Anandajothi were participated. Our Viceprincipal Dr. WMS. Johnson. Medical superintendent Dr. D. Sridhara Narayanan, and Advisor Dr. Veerabahu delivered their awareness speech. Finally, Traffic Police distributed pamphlets and spread the awareness messages.



### **WORKSHOP on "COLOSTOMY CARE AND WOUND CARE"**

Department of General Surgery and Medical Education Unit Organized a WORKSHOP on "COLOSTOMY CARE AND WOUND CARE" On 24 December 2019. Guest Speaker:



Prof. K. KUBERAN, MS, FRCS (Edinburgh) Professor, Department of General Surgery Sree Balaji Medical College, Chennai.

### **CME on A REVIEW ON PUBMED & OPEN ACCESS OUTREACHES**

Department of Respiratory Medicine & Community Medicine organized an CME on A REVIEW ON PUBMED & OPEN ACCESS OUTREACHES on 27.12.2019. Guest Speaker: Dr. Rathnasabapathy, Chief Librarian, National Institute of Tuberculosis, Research Faculty NIRT, Chennai.



### **National Conference LIBYCON 2019**

Department of Central Library Organized a National Conference on INFORMATION AND COMMUNICATION TECHNOLOGY (ICT) IN LIBRARIES "LIBYCON 2019" 28



December 2019. Guest Speaker: Dr. Nithyanandham President, Madras Library Association & Former Director & University Librarian, Anna University. Dr.P.Balasubramanian University Librarian & Head, Department of Library & Information Science, Manonmaniam Sundaranar University. Dr.Mahindra N Jadhav Librarian Central Library, Indian Institute of Technology Madras Chennai.



### **International Conference on Microbial Iron Respiration**

Department of Microbiology Organizing an International Conference on Microbial Iron Respiration, on 28.12.2019 & 29.12.2019. Guest Lecture: Dr. Wee Seng Kew, Microbiologist/ Scientist, Malaysia, Dr. Jude, Microbiologist, Srilanka.



## PUBLICATION'S

| S.No | Authors   | Title   | Journal  |
|------|---|---|--|
| 1    | Grace A.G., Mittal A., Jain S., Tripathy J.P., Satyanarayana S., Tharyan P., Kirubakaran R. | Shortened treatment regimens versus the standard regimen for drug-sensitive pulmonary tuberculosis  | Cochrane Database of Systematic Reviews                  |
| 2    | Namdar P.K., Krishna Prasanth B., Aravindha Babu N., Prabakaran M.                          | Eagle syndrome causing dysphagia and throat pain A case report  | Indian Journal of Public Health Research and Development |
| 3    | Pavan Kumar N., Krishna Prasanth B., Prabakaran M., Babu A.                                 | " osteopoikilosis-benign osteosclerotic dysplasia -a case report  | Indian Journal of Public Health Research and Development |
| 4    | Ethiraj D., Indiran V.  | Primary Hyperoxaluria-Imaging of Renal Oxalosis   | Urology  |
| 5    | Poojitha S., Jagadeeshwari S., Sundari S.   | A case study of hemoptysis in 4 years old   | Drug Invention Today                                     |
| 6    | Ramesh S., Sundari S.   | Ectopic thyroid mimicking a thyroglossal cyst: A case report  | Drug Invention Today                                     |
| 7    | Sundari A.S.  | A case of solitary rectal ulcer syndrome in a 12-year-old boy   | Drug Invention Today                                     |
| 8    | Raghuram R., Ramya R., Ramesh S., Sundari S.  | Distal renal tubular acidosis secondary to vesicoureteral reflex: A case report in a 14-year-old girl   | Drug Invention Today                                     |
| 9    | Jagadeeswari S.   | A study on thyroid function test in children with nephritic syndrome admitted to a tertiary care hospital   | Drug Invention Today                                     |
| 10   | Paavai S., Thomas J.  | To study prevalence of insulin resistance in acne vulgaris  | Indian Journal of Public Health Research and Development |
| 11   | Sathyavathy K., Kiran Madhusudhan B.  | Study of role of agnori in thyroid lesions  | Indian Journal of Public Health Research and Development |
| 12   | Singla A., Gopalakrishnan S.  | Mobile phone use and possible cancer risk: A review   | Indian Journal of Public Health Research and Development |
| 13   | Ahmed A.M., Vikram C., Santhaseelan R.G.  | To compare the efficacy of azithromycin pulse therapy with doxycycline in acne vulgaris treatment: An open labelled, randomised, parallel group, hospital based study | Indian Journal of Public Health Research and Development |
| 14   | Indu I., Saraswathi K.  | A study on maternal blood zinc level & SGA vs SGA in tertiary care hospital in Chennai  | Indian Journal of Public Health Research and Development |
| 15   | Jaishree P.,  | Dyslipidemia on type 2 diabetes   | Indian Journal of Public                                 |



|    |   |  |  |
|----|---|--|--|
|    | Krishnakumar J.,<br>Gopalakrishnan S.                                   | mellitus   | Health Research and<br>Development                             |
| 16 | Mohan P., Stephen<br>T., Gopalakrishnan<br>S.                           | Effects of cosmetics on the<br>aetiology of acne vulgaris  | Indian Journal of Public<br>Health Research and<br>Development |
| 17 | Janani M.,<br>Krishnakumar J.,<br>Gopala Krishnan S.                    | Depression in primary healthcare   | Indian Journal of Public<br>Health Research and<br>Development |
| 18 | Muruges E.,<br>Devimeenal J.,<br>Krishna Prasanth<br>B., Pavan Kumar N. | CT guided radiofrequency ablation<br>of osteoid osteoma  | Indian Journal of Public<br>Health Research and<br>Development |
| 19 | Vimalshika R.,<br>Yuvarani R.   | A study on genito urinary<br>problems among automobile<br>workers in Chennai   | Indian Journal of Public<br>Health Research and<br>Development |
| 20 | Pinaki N., Stephen<br>T., Gopala Krishnan<br>S.                         | Trend of caffeine use among<br>people of different occupatiand age<br>group and its health implications  | Indian Journal of Public<br>Health Research and<br>Development |
| 21 | Vaishali A.L.,<br>Gopalakrishnan S.                                     | Metabolic syndrome: A short<br>review  | Indian Journal of Public<br>Health Research and<br>Development |
| 22 | Thomas J.,<br>Manoharan K.  | A study of airtraq optical<br>laryngoscope for intubation in<br>adult surgical patients, a<br>prospective randomized controlled<br>study                   | Indian Journal of Public<br>Health Research and<br>Development |
| 23 | Rameshbhai J.A.,<br>Krishna K.J.,<br>Gopalkrishnan S.                   | Occupational and environmental<br>exposure to lead and reproductive<br>health impairment   | Indian Journal of Public<br>Health Research and<br>Development |
| 24 | Jeevan Prakassh B.,<br>Kumar K., Krishnan<br>G.                         | Study on increase in usage of<br>alcohol among college students  | Indian Journal of Public<br>Health Research and<br>Development |
| 25 | Bhanuda S.,<br>Ravanagomagan,<br>Jagadeeswari,<br>Sundari S.            | Acute phenytoin intoxication in a<br>4-year old mimicking viral<br>Meningo-encephalitis  | Indian Journal of Public<br>Health Research and<br>Development |
| 26 | Muzamil Ahmed<br>A., Vikram C.,<br>Santhaseelan R.G.                    | Role of 3Dct in fractures around<br>the knee joint   | Indian Journal of Public<br>Health Research and<br>Development |
| 27 | Nambi S.,<br>Sivashankar P.   | Association of selected variables<br>with ocular morbidity among<br>school going children in<br>Kancheepuram district, Tamil<br>Nadu                       | Indian Journal of Public<br>Health Research and<br>Development |
| 28 | Srinivas S.,<br>Anantha Eashwar<br>V.M.,<br>Gopalakrishnan S.           | Study on alopecia and its impact in<br>everyday life among alopecia<br>patients visiting tertiary health<br>centre in thiruvalluvar district of<br>chennai | Indian Journal of Public<br>Health Research and<br>Development |

|    |  |  |  |
|----|--|--|--|
| 29 | Prabhu K.,<br>Rajasundharam A.,<br>Jayakumari S.,<br>Durga Devi G. | Ki-67 proliferative marker in<br>thyroid lesions   | Indian Journal of Public<br>Health Research and<br>Development |
| 30 | Reddy D.S., John<br>Solomon P.                                     | Steroids for nasal polyposis and its<br>impact on quality of life  | Indian Journal of Public<br>Health Research and<br>Development |
| 31 | Arshad A.R.,<br>Rajashekar M.R.,<br>Srinivasan                     | Comparison between conventional<br>gastric adenocarcinoma and ebv<br>associated gastric carcinoma  | Indian Journal of Public<br>Health Research and<br>Development |
| 32 | Shanmuga Priya A.,<br>Rao P.M.                                     | Ultrasound mediated brachial<br>plexus block (Supraclavicular)   | Indian Journal of Public<br>Health Research and<br>Development |
| 33 | Ramakrishnan C.,<br>Jagan G.,<br>Vedamanickam R.                   | Study on carcinomas of breast with<br>special reference to expressions of<br>vascular endothelial growth factor<br>(VEGF)  | Indian Journal of Public<br>Health Research and<br>Development |
| 34 | Rina L., Kalaiselvi<br>V.S., Shanthi B.                            | Comparison of serum lipid profile<br>level in hypothyroid patients and in<br>healthy control   | Indian Journal of Public<br>Health Research and<br>Development |
| 35 | Rahe R., Sarath K.,<br>Sreelekha D.,<br>Kumarasami S.              | Risk factors for depression among<br>adolescents in urban<br>kancheepuram district area, Tamil<br>Nadu objectives  | Indian Journal of Public<br>Health Research and<br>Development |
| 36 | Aggarwal A.,<br>Venkatraman I.,<br>Prabakaran M.                   | A study on ocular problems among<br>automobile workers in Chennai  | Indian Journal of Public<br>Health Research and<br>Development |
| 37 | Sahdiyya H.,<br>Krishna K.J.,<br>Gopalakrishnan S.                 | Case report respiratory failure<br>presenting h1n1 influenzawith<br>legionnaires disease   | Indian Journal of Public<br>Health Research and<br>Development |
| 38 | Aravind R., Mohan<br>Kumar P.,<br>Gopalakrishnan S.                | The incidence and health burden of<br>earaches attributable to<br>recreational swimming in natural<br>waters: A prospective cohort study   | Indian Journal of Public<br>Health Research and<br>Development |
| 39 | Priya Margaret A.,<br>Ramesh S., Sundari<br>S.                     | Prevalence of hypertension and its<br>correlation with diet in school<br>going adolescent girls in an urban<br>setting   | Indian Journal of Public<br>Health Research and<br>Development |
| 40 | Prabhu K.,<br>Rajasundaram A.                                      | Pattern of depression among<br>adolescents in an urban area of<br>kancheepuram District, Tamil<br>Nadu   | Indian Journal of Public<br>Health Research and<br>Development |
| 41 | Reddy D.S., John<br>Solomon P.                                     | A study of injection 0.75%<br>ropivacaine for its duration of<br>anaesthesia / analgesia in<br>transversus abdominis plane block<br>for unilateral inguinal hernia repair<br>under ultrasound guidance | Indian Journal of Public<br>Health Research and<br>Development |
| 42 | Sathya V., Bupesh<br>G., Vasanth S.,                               | Evaluation of urinary iodine and<br>thyroid hormone in   | Indian Journal of Public<br>Health Research and                |



|    |   |   |  |
|----|---|---|--|
|    | Somasekar R.,<br>Ramadevi K.,<br>Vijayanandh A.                 | hypothyroidism of South Indian population   | Development  |
| 43 | Siva<br>Sankarasekaran V.,<br>Swetha N.B.,<br>Gopalakrishnan S. | Prevalence of gaming and its psychological effects among young adults in an Urban Area of Chennai   | Indian Journal of Public Health Research and Development |
| 44 | Kalaiselvi V.S.,<br>Sumathi K.                                  | Clinicopathological spectrum of breast carcinoma cases in Sree Balaji medical college and hospital  | Indian Journal of Public Health Research and Development |
| 45 | Manivel T., Jagan G.  | To evaluate the efficacy of metformin monotherapy in newly diagnosed type 2 diabetes mellitus patients by assessing the hba1c percentage reduction as a single diagnostic tool for glycemic control and its incidence in preventing macrovascular complications: A prospective open label study for a period of 6 months duration | Indian Journal of Public Health Research and Development |
| 46 | Reddy D.S.,<br>Solomon P.J.                                     | Serum zinc level in children with febrile convulsions in comparison with febrile children without convulsions   | Indian Journal of Public Health Research and Development |
| 47 | Anbukkarasi K.,<br>Ganapathy H.                                 | Histomorphological study of lesions of upper respiratory tract  | Indian Journal of Public Health Research and Development |
| 48 | Priyareshma T.,<br>Mohan Kumar P.,<br>Gopalakrishnan S.         | A study on symptoms of stress and stress management strategies among pre-final and final year medical students in Kanchipuram district, Tamil nadu  | Indian Journal of Public Health Research and Development |
| 49 | Roy J.E., Shanthi B.,<br>Kalaiselvi V.S.                        | Serum hepcidin levels in chronic kidney disease   | Indian Journal of Public Health Research and Development |
| 50 | Manivel T.,<br>Vedamanickam R.                                  | To evaluate the anti inflammatory effect of metformin on c reactive protein in newly diagnosed type 2 diabetes mellitus patients: A open label prospective study conducted in a tertiary care hospital for 6 months period  | Indian Journal of Public Health Research and Development |
| 51 | Renuka Devi M.R.,<br>Devaki P.R.                                | A study on age incidence of thyroid nodule in our institution   | Indian Journal of Public Health Research and Development |
| 52 | Mohammed Irshad Basha A.,<br>Venkatachalam K.                   | Assessment of the complication and radiological outcome of proximal femoral nailing in unstable trochanteric fractures  | Indian Journal of Public Health Research and Development |

|    |  |  |  |
|----|--|--|--|
| 53 | Umesh A., Devi U., Krishnan G., Suresh R.          | A case study on Pierre Robinson syndrome   | Indian Journal of Public Health Research and Development |
| 54 | Lionel J.J., Pugazhendhi G.                        | Comparison of CT volume rendering images with axial sections in diagnosing facial bone fractures       | Indian Journal of Public Health Research and Development |
| 55 | Indu I., Saraswathi K.                             | Postpartum voiding dysfunction in vaginal delivery: Identifying the risk factors                       | Indian Journal of Public Health Research and Development |
| 56 | Shanmuga Priya A., Rao P.M.                        | Neurostimulation guided brachial plexus block (Supraclavicular)  | Indian Journal of Public Health Research and Development |
| 57 | Indu I., Saraswathi K.                             | A study on maternal zinc and cord blood zinc levels in aga and SGA                                     | Indian Journal of Public Health Research and Development |
| 58 | Venkatesan V., Kavimani M.                         | Congenital anomalies prevalence in routine antenatal ultrasound  | Indian Journal of Public Health Research and Development |
| 59 | Vivek K., Jagan G.                                 | Platelet-rich plasma injections for chronic plantar fasciitis  | Indian Journal of Public Health Research and Development |
| 60 | Sathish T., Kumar M., Gopala Krishnan S.           | Prevalence of alcohol consumption among medical students in Kancheepuram                               | Indian Journal of Public Health Research and Development |
| 61 | Sneha K., Thomas J.                                | Alopecia areata an over view   | Indian Journal of Public Health Research and Development |
| 62 | Paavai S., Jayakar T.                              | A study on cutaneous hyperandrogenism in adult male with ACNE  | Indian Journal of Public Health Research and Development |
| 63 | Sripati T.K., Govindarajan, Ganapathy H.           | Evaluation of non immune mediated thrombocytopenia in children at tertiary health care center, Chennai | Indian Journal of Public Health Research and Development |
| 64 | Reddy D.S., Solomon P.J.                           | A study on socio demographic profile of the prisoners lodged in central prison, Chennai                | Indian Journal of Public Health Research and Development |
| 65 | Swetha A., Anantha Eashwar V.M., Gopalakrishnan S. | Prevalence of gastroesophageal reflux disease and gastritis in Chennai and Kanchipuram district        | Indian Journal of Public Health Research and Development |
| 66 | Nambi S., Sivashankar P.                           | Prevalence of hypertension among rural adult population of kancheepuram, tamil nadu                    | Indian Journal of Public Health Research and Development |
| 67 | Sushmitha R., Ramesh S., Sundari                   | A study on risk factors of nocturnal enuresis in children  | Indian Journal of Public Health Research and Development |
| 68 | Sushmitha R., Ramesh S., Sundari                   | A study on clinical profile and risk factors of nocturnal enuresis in children                         | Indian Journal of Public Health Research and Development |



|    |  |  |  |
|----|--|--|--|
| 69 | Bavishna B.,<br>Umadevi R.,<br>Gopala Krishnan S.            | Pediatric diabetes: Review article   | Indian Journal of Public Health Research and Development |
| 70 | Sushmitha R.,<br>Ramesh S., Sundari                          | A study on clinical profile of nocturnal enuresis in children  | Indian Journal of Public Health Research and Development |
| 71 | Vimalshika R.,<br>Yuvarani R.                                | Consequence of early versus late cord clamping on neonatal outcome   | Indian Journal of Public Health Research and Development |
| 72 | Roy J.E., Shanthi B.,<br>Kalaiselvi V.S.                     | Evaluation of the clinical history with itâ€™s features with the histological findings with p16ink4a stained cervical biopsy | Indian Journal of Public Health Research and Development |
| 73 | Mohana T.,<br>Yuvarani R.                                    | Assessment and evaluation of etiological factors in cases of female primary infertility                                      | Indian Journal of Public Health Research and Development |
| 74 | Vijay Narasimman Reddy V.,<br>Sivakumar A.                   | Comparison of CT multiplanar reconstruction with axial sections in diagnosing facial bone fractures                          | Indian Journal of Public Health Research and Development |
| 75 | Swathi S., Anantha Eswar V.M.,<br>Gopala Krishnan S.         | Can yoga and meditation mitigate physical and emotional fluctuations in perimenopausal women                                 | Indian Journal of Public Health Research and Development |
| 76 | Mitul R., Padma V.   | Sex distribution of padindiabetic patients   | Indian Journal of Public Health Research and Development |
| 77 | Naveen Kumar V.,<br>Saikumar C.                              | Prevalence of escherichia coli in urine samples in a tertiary care hospital  | Indian Journal of Public Health Research and Development |
| 78 | Janarthanan R.,<br>Krishnakumar J.,<br>Gopala K.S.           | Prevalence of food allergy among young adults: A cross sectional study   | Indian Journal of Public Health Research and Development |
| 79 | Prasanthi M.,<br>Revathy T.G.                                | Recent trend in rise of caesarean section in multigravida and primigravida   | Indian Journal of Public Health Research and Development |
| 80 | Kanakadurga Sripati T.,<br>Govindarajan,<br>Ganapathy H.     | Study of thrombocytopenia in adults due to decreased production  | Indian Journal of Public Health Research and Development |
| 81 | Vivekanandhan P.,<br>Venkatachalam K.                        | Functional consequence of antegrad unreamed humeral interlocking nailing in adults   | Indian Journal of Public Health Research and Development |
| 82 | Lakshita S., Edward S.,<br>Gopala Krishnan S., Thandapani R. | Prevalance of stress among medical interns   | Indian Journal of Public Health Research and Development |
| 83 | Ramesh S., Sundari S.  | Crouzon syndrome A case report   | Indian Journal of Public Health Research and Development |
| 84 | Jayanth M.,  | Correlation of parenchymal   | Indian Journal of Public                                 |

|    |   |   |  |
|----|---|---|--|
|    | Chandrasekhar V.,<br>Prabakaran M.                      | thickness of kidneys with<br>ultrasonography in various clinical<br>stages of chronic type ii diabetes              | Health Research and<br>Development                             |
| 85 | Rohra S., Swetha<br>N.B.,<br>Gopalakrishnan S.          | Effect of caffeine consumption on<br>mood and alertness of medical<br>students of urban area of<br>kanchipuram      | Indian Journal of Public<br>Health Research and<br>Development |
| 86 | Pillella V.K.,<br>Vijaynarasimman<br>Reddy V.           | Functional outcome analysis of<br>open reduction and internal<br>fixation of complex acetabular<br>fractures        | Indian Journal of Public<br>Health Research and<br>Development |
| 87 | Gowthaman S.,<br>Swetha N.B.,<br>Gopala Krishnan S.     | Awareness about breast cancer and<br>its risk factors among college<br>students                                     | Indian Journal of Public<br>Health Research and<br>Development |
| 88 | Karam P., Shanthi<br>B., Selvi K.                       | Study of lipid profile in metabolic<br>syndrome patients  | Indian Journal of Public<br>Health Research and<br>Development |
| 89 | Arshad A.R.,<br>Rajashekar M.R.,<br>Srinivasan          | A study on functional outcome of<br>surgical mangement in unstable<br>pelvic fractures                              | Indian Journal of Public<br>Health Research and<br>Development |
| 90 | Sundari S., John<br>Solomon P.                          | Pattern of ocular morbidity among<br>school going children of 6-16 years<br>in kancheepuram district, tamil<br>nadu | Indian Journal of Public<br>Health Research and<br>Development |
| 91 | Kumar M.N.,<br>Stephen T.                               | A study of the knowledge and<br>attitude towards pulsepolio in<br>urban areas of South India                        | Indian Journal of Public<br>Health Research and<br>Development |
| 92 | Naveen Kumar V.,<br>Karthikeyan S.,<br>Ravishankar K.S. | A various etiologies of intestinal<br>obstruction - a case series   | Indian Journal of Public<br>Health Research and<br>Development |
| 93 | Aljin V., Savitha<br>A.K., Suthanthira<br>Kannan S.     | Evaluation of self-medication<br>practices in urban area of<br>Kancheepuram district, Tamil<br>Nadu                 | Indian Journal of Public<br>Health Research and<br>Development |
| 94 | Rina L., Shanthi B.,<br>Kalaiselvi V.S.                 | To estimate and compare<br>serumlipoprotein (A)value in<br>hypothyroid patients and healthy<br>control              | Indian Journal of Public<br>Health Research and<br>Development |
| 95 | Rajasekar M.K.,<br>Sumitha R.                           | Hearing assessment in<br>myringoplasty  | Indian Journal of Public<br>Health Research and<br>Development |
| 96 | Sundari S.,<br>Solomon P.J.                             | Risk factors for ocular morbidity<br>among school going children in<br>Kancheepuram District, Tamil<br>Nadu         | Indian Journal of Public<br>Health Research and<br>Development |
| 97 | Vivekanandhan P.,<br>Venkatachalam K.                   | The functional outcome of<br>antegrade unreamed humeral<br>interlocking nailing in adults                           | Indian Journal of Public<br>Health Research and<br>Development |



|     |  |   |  |
|-----|--|---|--|
| 98  | Sruthy S.R.,<br>Thomas J.                          | A study on dermatoglyphic pattern in palmar lesions   | Indian Journal of Public Health Research and Development |
| 99  | Arshad A.R.,<br>Rajashekar M.R.,<br>Srinivasan     | Appropriation of ocular perfusion pressure and its relationship in development of open-angle glaucoma                       | Indian Journal of Public Health Research and Development |
| 100 | Prabakaran M.,<br>Ramachandra Prasad T.            | Distribution of age and sex in patients with facial trauma referred for computed tomography scan                            | Indian Journal of Public Health Research and Development |
| 101 | Rajkumar S.,<br>Darwin P.,<br>Karthikeyan C.T.     | Affectability of usg guided fnac of axillary lymph nodes in breast cancer patients with clinically node negative axilla     | Indian Journal of Public Health Research and Development |
| 102 | Anagha V.K.,<br>Gopalakrishnan S.                  | Appendicular adenocarcinoma with pseudomyxoma: A case report  | Indian Journal of Public Health Research and Development |
| 103 | Vasanth S., Bupesh G.                              | Sub-lethal effects of triazine herbicides on oxidative stress and antioxidant response in poecilia sphenops tissues         | Indian Journal of Public Health Research and Development |
| 104 | Sathish D.,<br>Mohankumar P.,<br>Gopalakrishnan S. | A study on awareness and perception regarding eye donation among students of a medical college in Kanchipuram District      | Indian Journal of Public Health Research and Development |
| 105 | Jina H., Prabha L.,<br>Nambi S.                    | Suicidal behavior in adolescents: A tertiary hospital based study   | Indian Journal of Public Health Research and Development |
| 106 | Arumugam A.A.,<br>Gopalakrishnan G.                | Gallstone ileus: A rare presentation of cholecystoduodenal fistula in a female  | Indian Journal of Public Health Research and Development |
| 107 | Shalini P., Suresh N.,<br>Ganapathy H.             | Expression of Ki 67 and Bcl 2 in endometrial hyperplasia  | Indian Journal of Public Health Research and Development |
| 108 | Santhosh S.,<br>Subramanian K.                     | Mechanism of unstable inter-trochanteric fractures in the elderly   | Indian Journal of Public Health Research and Development |
| 109 | Roy J.E., Shanthi B.,<br>Kalaiselvi V.S.           | Serum hepcidin as a marker of anemia in chronic kidney disease  | Indian Journal of Public Health Research and Development |
| 110 | Rajasekar M.K.,<br>Sridharanarayanan D.            | Prosepective study of conchal cartilage and temporalis graft in myringoplasty   | Indian Journal of Public Health Research and Development |
| 111 | Jayanth M.,<br>Chandrasekhar V.,<br>Prabakaran M.  | Correlation of parenchymal thickness of kidneys with ultrasonography in various clinical stages of chronic type-ii diabetes | Indian Journal of Public Health Research and Development |
| 112 | Anbukkarasi K.,<br>Ganapathy H.                    | Ki-67 expression in scc of upper respiratory tract  | Indian Journal of Public Health Research and             |

|     |   |   |  |
|-----|---|---|--|
|     |   |   | Development  |
| 113 | Nithesh Kumar A.,<br>Ameen N.   | Occurrence of euthyroid sick syndrome in acute myocardial infarction and their prognostic significance                          | Indian Journal of Public Health Research and Development |
| 114 | Vidhyalakshmi S.,<br>Anantha Eashwar V.M.,<br>Gopalakrishnan S.                                       | A study to assess depression among patients with non-communicable diseases attending a tertiary care hospital                   | Indian Journal of Public Health Research and Development |
| 115 | Pradeep R.,<br>Prabakaran M.,<br>Venkataraman I.  | To evaluate the role of MRV in normal variants of cerebral venous sinuses   | Indian Journal of Public Health Research and Development |
| 116 | Shalini P., Suresh N., Ganapathy H.   | Proximal femoral nailing in unstable trochanteric fractures-demographic study (Age, sex and mode of injury)                     | Indian Journal of Public Health Research and Development |
| 117 | Jaya Lakshmi P.B.,<br>Anusha Rao S.,<br>Mathew Nishanth A., Krishna Prasanth B.,<br>Aravindha Babu N. | Dyslexia awareness among school teachers  | Indian Journal of Public Health Research and Development |
| 118 | Thumjaa A.,<br>Ramesh S.  | A study on risk factors for hypertension among rural adult population of Kancheepuram, Tamil Nadu                               | Indian Journal of Public Health Research and Development |
| 119 | Muzamil Ahmed A., Vikram C.,<br>Santhaseelan R.G.   | A study on life style habits of the life convicts lodged in central prison, Chennai   | Indian Journal of Public Health Research and Development |
| 120 | Vivekanandhan P.,<br>Anand N.N.   | Outcome assessment of operative treatment of humeral shaft fractures by antegrade unreamed humeral nailing (Uhn)                | Indian Journal of Public Health Research and Development |
| 121 | Anbukkarasi K.,<br>Ganapathy H.   | Histopathological study of lesions of nasal cavity and paranasal sinus  | Indian Journal of Public Health Research and Development |
| 122 | Shanmugasundaram S., Swetha N.B.,<br>Gopalakrishnan S.  | Effect of electronic gadget usage on sleep quality among medical students in chennai  | Indian Journal of Public Health Research and Development |
| 123 | Divya Reddy V.,<br>Krishnakumar J.,<br>Gopala Krishnan S.,<br>Thandapani R.                           | Awareness and acceptance of HPV vaccination among school teachers: A cross sectional study                                      | Indian Journal of Public Health Research and Development |
| 124 | Rajkumar S.,<br>Darwin P.,<br>Karthikeyan C.T.  | Sonological evaluation of the clinically negative axilla in women with breast cancer  | Indian Journal of Public Health Research and Development |
| 125 | Mohan Kumar P.,<br>Savitha A.K.,<br>Suthanthira Kannan S.   | To compare the side effect profile of azithromycin pulse therapy with doxycycline in acne vulgaris treatment: An open labelled, | Indian Journal of Public Health Research and Development |



|     |   |   |  |
|-----|---|---|--|
|     |   | randomised, parallel group, hospital based study  |  |
| 126 | Sathyavathy K.,<br>Kiran<br>Madhusudhan B.                        | Isolation and identification of klebsiella species from various clinical samples at a tertiary care hospital, south India               | Indian Journal of Public Health Research and Development |
| 127 | Anjanaa A.,<br>Gayathri D.T.,<br>Ganapathy H.                     | Epidemiology of breast cancer: A case series  | Indian Journal of Public Health Research and Development |
| 128 | Prabu D.,<br>Ramachandra<br>Prasad T.,<br>Prabakaran M.           | Prevalence of self-medication practices in urban area of Kancheepuram district, Tamil Nadu  | Indian Journal of Public Health Research and Development |
| 129 | Sathyavathy K.,<br>Kiran<br>Madhusudhan B.                        | Study to determine the potential risk categories and risk factors for developing steatohepatitis in NAFLD cases with metabolic syndrome | Indian Journal of Public Health Research and Development |
| 130 | Prasanthi M.,<br>Revathy T.G.                                     | To study the morbidity and mortality of primary cesarean section in multigravida  | Indian Journal of Public Health Research and Development |
| 131 | Aggarwal A.,<br>Venkatraman I.,<br>Prabakaran M.                  | Spectrum of MRI findings in patients of giddiness   | Indian Journal of Public Health Research and Development |
| 132 | Gopalakrishnan S.,<br>Krishnakumar J.                             | A study on awareness treatment and control of hypertension among rural adult population of Kancheepuram, Tamil Nadu                     | Indian Journal of Public Health Research and Development |
| 133 | Shalini P., Suresh N., Ganapathy H.                               | Study of prevalence of thyroid lesions of patients coming to department of pathology, sbmch   | Indian Journal of Public Health Research and Development |
| 134 | Vimalshika R.,<br>Yuvarani R.                                     | A study on oral cavity problems among automobile workers in chennai   | Indian Journal of Public Health Research and Development |
| 135 | Ahmed A.M.,<br>Vikram C.,<br>Santhaseelan R.G.                    | Distribution of hypertensive patients associated with development of open angle glaucoma  | Indian Journal of Public Health Research and Development |
| 136 | Hiranmayi A.,<br>Gopalakrishnan S.,<br>Reddy A.T.,<br>Abhinaya C. | Atrophoderma of pasini and pierini in an adolescent male: A case report   | Indian Journal of Public Health Research and Development |
| 137 | Prabu D.,<br>Ramachandra<br>Prasad T.,<br>Prabakaran M.           | Specificity and sensitivity of ultrasound and MRI in the diagnosis of unicornuate uterus  | Indian Journal of Public Health Research and Development |
| 138 | Chawla G.S.,<br>Krishnakumar J.,<br>Gopalakrishnan S.             | Emergence of adhd among young people: A review article  | Indian Journal of Public Health Research and Development |

|     |  |  |  |
|-----|--|--|--|
| 139 | Teja C.S., Umadevi R., Gopalakrishnan S.                         | A case report on prostate ductal adenocarcinoma presenting with hematuria  | Indian Journal of Public Health Research and Development |
| 140 | Prashar R., Mohan Kumar P., Gopal Krishnan S.                    | Occupational health hazard in sewage and sanitary workers  | Indian Journal of Public Health Research and Development |
| 141 | Prudhvi B.S., Mohan K.P., Gopalakrishnan S.                      | Usage and perceptions of anabolic-androgenic steroids among male fitness centre attendees in urban area of Kancheepuram district in Tamil Nadu | Indian Journal of Public Health Research and Development |
| 142 | Aggarwal A., Venkatraman I., Prabakaran M.                       | Analysing the p16ink4a stained uterine cervical biopsy specimen histopathological findings   | Indian Journal of Public Health Research and Development |
| 143 | Indu I., Saraswathi K.   | Evaluation of incidence and risk factors of postpartum urinary retention in women with vaginal delivery  | Indian Journal of Public Health Research and Development |
| 144 | Shreya Rajkumar P., Darwin C.T., Karthikeyan                     | Breast carcinoma: A review   | Indian Journal of Public Health Research and Development |
| 145 | Saraswathi K., Bawa R., Nirupa S.                                | Evaluation of anemia in pregnant mothers in correlation with anthropometry measures in tertiary care hospital                                  | Indian Journal of Public Health Research and Development |
| 146 | Rajasundaram A., Jayakumari S.                                   | A study on cord blood zinc levels with age and parity in sgapregenant mothers  | Indian Journal of Public Health Research and Development |
| 147 | Venkata Nagapoojitha L., Anantha Eashwar V.M., Gopalakrishnan S. | Parenteral breastfeeding practices in rural population of Kancheepuram District  | Indian Journal of Public Health Research and Development |
| 148 | Sandhya M., Mohan K.P., Gopalakrishnan S.                        | Study on immunization knowledge, attitude and practice among the parents having children less than 16 years of age                             | Indian Journal of Public Health Research and Development |
| 149 | Tejas M., Anantha Eashwar V.M., Gopalakrishnan S.                | Are pets stress busters or cause of allergy  | Indian Journal of Public Health Research and Development |
| 150 | Nithesh Kumar A., Ameen N.                                       | Occurrence of euthyroid sick syndrome in acute myocardial infarction and their duration of ICU stay  | Indian Journal of Public Health Research and Development |
| 151 | Tejal H., Anantha Eshwar V.M., Krishnan S.G.                     | Prevalance of obesity among urban population in thiruvallur district   | Indian Journal of Public Health Research and Development |
| 152 | Harsha M.S., Krishna K.J., Gopala K.S.                           | Using machine learning as a diagnostic tool for pneumonia using chest X-ray images   | Indian Journal of Public Health Research and Development |

|     |   |   |  |
|-----|---|---|--|
| 153 | Indu I., Saraswathi K.                            | Evaluation of incidence of postpartum urinary retention in vaginal delivery   | Indian Journal of Public Health Research and Development |
| 154 | Harshan R., Krishnakumar J., Gopala K.S.          | Correlation between gastrointestinal disorders and stress among it professionals  | Indian Journal of Public Health Research and Development |
| 155 | Naveen Kumar V., Kumar C.                         | Prevalence of esbl producing escherichia coli in urine samples in a tertiary care hospital  | Indian Journal of Public Health Research and Development |
| 156 | Vishnoi K., Venkatraman I., Prabakaran M.         | Acoustic radiation force impulse in alcoholic liver disease   | Indian Journal of Public Health Research and Development |
| 157 | Kumar P.M., Savitha A.K., Kannan S.S.             | The role of computed tomography in evaluation of nasal polyposis  | Indian Journal of Public Health Research and Development |
| 158 | Mohammed Irshad Basha A., Venkatachalam K.        | Assessment of the functional outcome of proximal femoral nailing in unstable trochanteric fractures   | Indian Journal of Public Health Research and Development |
| 159 | Naveen Kumar V., Swaminathan G., Ravishankar K.S. | A various method of surgical management in patients with acute intestinal obstruction: A case series  | Indian Journal of Public Health Research and Development |
| 160 | Arshad A.R., Rajashekar M.R., Srinivasan          | Assessment of socio-demographic characteristics and immunization status of under-five children in an urban area of kancheepuram district            | Indian Journal of Public Health Research and Development |
| 161 | Shini Yassmin S., Swetha N.B., Gopala Krishnan S. | Cross sectional study on hearing ability and its association with usage of earphones among medical students   | Indian Journal of Public Health Research and Development |
| 162 | Karam P., Shanthi B., Selvi K.                    | Study of prevalence of non-alcoholic fatty liver disease in already diagnosed metabolic syndrome patients in selected South Indian population       | Indian Journal of Public Health Research and Development |
| 163 | Muzamil Ahmed A., Vikram C., Santhaseelan R.G.    | Comparision of pre-operative & post-operative pain grading after diagnostic laparoscopy in patients presenting with chronic abdominal pain at SBMCH | Indian Journal of Public Health Research and Development |
| 164 | Reddy D.S., John Solomon P.                       | Serum zinc level in children with febrile convulsion in comparison with normal children   | Indian Journal of Public Health Research and Development |
| 165 | Pillella V.K., Vijaynarasimman Reddy V.           | Examination of displaced acetabular fractures in adults treated qith open reduction and internal fixation   | Indian Journal of Public Health Research and Development |
| 166 | Abirami E., Saraswathi K.                         | Prevalence of menstrual abnormality in adolescent girls   | Indian Journal of Public Health Research and             |



|     |  |  |  |
|-----|--|--|--|
|     |  |  | Development  |
| 167 | Johnson W.M.S.,<br>Archana R., Koshy J.M.  | Working posture among bank employees in chennai: A cross sectional study   | Indian Journal of Public Health Research and Development |
| 168 | Arshad A.R.,<br>Rajashekar M.R.,<br>Srinivasan   | A study on age and sex demogrpahics in unstable pelvic fractures   | Indian Journal of Public Health Research and Development |
| 169 | Jefferson B.,<br>Venkatraman I.,<br>Prabakaran M.  | Evaluation and description of colorectal pathologies using CT colonoscopy  | Indian Journal of Public Health Research and Development |
| 170 | Pradeep R., Johnson W.M.S.,<br>Venkatasen V.,<br>Kavimani  | Role of mrv in cerebral venous sinus thrombosis  | Indian Journal of Public Health Research and Development |
| 171 | Mohan Kumar P.,<br>Savitha A.K.,<br>Suthanthira Kannan S.  | Determinants of self-medication practices in urban area of Kancheepuram district, Tamil Nadu   | Indian Journal of Public Health Research and Development |
| 172 | Bhaskar P.K.,<br>Thomas J.   | A study on clinical features and dermatopathology of Palmar lesions  | Indian Journal of Public Health Research and Development |
| 173 | Ahmed A.M.,<br>Vikram C.,<br>Santhaseelan R.G.   | A prognostic study of diagnostic laparoscopy in chronic abdominal pain at SBMCH  | Indian Journal of Public Health Research and Development |
| 174 | Reddy D.S.,<br>Solomon P.J.  | A comparative study of serum zinc level in male and female of febrile seizure patients   | Indian Journal of Public Health Research and Development |
| 175 | Bhaskar P.K.,<br>Thomas J.   | Common dermatoses with palmar lesions  | Indian Journal of Public Health Research and Development |
| 176 | Bupesh, G;<br>Nandini, MS;<br>Vasanth, S;<br>Vijayakumar, TS;<br>Amutham, C;<br>Prabhu, K;<br>Balachandar, V | Molecular modelling and docking analysis of pleurocidin (an antimicrobial peptide) like peptides with enterotoxin H from Klebsilla pneumonia | Bioinformation   |
| 178 | Gopalakrishnan, S;<br>Eashwar, VMA;<br>Kumar, PM;<br>Umadevi, R  | Reproductive health status of rural married women in Tamil Nadu: A descriptive cross-sectional study   | Journal Of Family Medicine And Primary Care              |
| 179 | Indumathi, CP;<br>Bupesh, G;<br>Vasanth, S;<br>Senthilkumar, V;<br>Anandh, AV;<br>Pandian, K                 | Molecular docking analysis of zanamavir with haem agglutinin neuraminidase of human para influenza virus type 3                              | Bioinformation   |